

# JBE-2401

## Conventional manual call point



The JBE-2401 is a manual call point for conventional systems. It is compatible with conventional Jade Bird control panels and addressable zone module JBE-2200 and with most conventional control panels on the market.

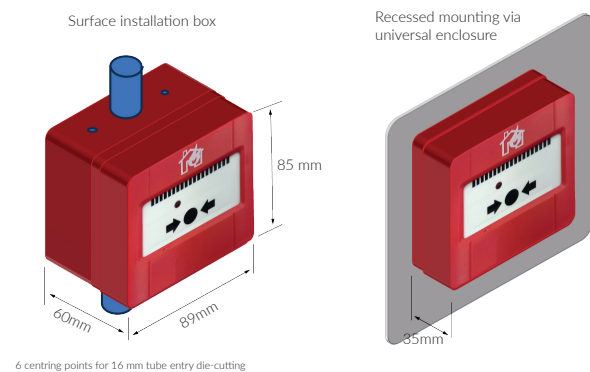
The JBE-2401 resettable manual call point has been developed for use in conventional firefighting installations. Once activated, it remains active until a manual reset is performed with the key.

The JBE-2401 conventional manual call point is an essential element for manual call point alarm generation in the conventional system. The manual call point is connected directly to the area (Includes 100 & 470  $\Omega$  2W resistance for the alarm level in the conventional system). The absorption current is configurable by jumpers to select the limiting resistor of 100 or 470 ohms.

### Key Features

- Conventional resettable manual call point.
- Includes key to reassemble the button.
- Includes two 100 and 470  $\Omega$  2W resistances for the alarm level.
- Independent cable input and output.
- EN 54-11 certified.

### Mechanical Dimensions (all dimensions in mm)



### TECHNICAL DATA

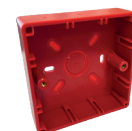
Working voltage	De 6 a 30 Vcc
Activation current	<100 mA (depending on central and configuration)
Absorption Current Setting	R470 R100
Wiring	Twisted pair, max. wiring gauge 2.5 mm2
Working temp	-10°C ~ 55°C
Environment	≤ 95% HR (40±2°C) (no condensation nor icing)
Dimensions	89 mm x 85 mm x 35 mm
IP Rating	IP20
Weight	100 gr
Certification	EN 54-11 0370-CPR-7364

### Accessories



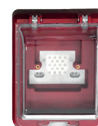
IF-CFC

Tilting protective cover for manual call point



IF-SMP

Installation base for sufficiency



BOX-2102

Exterior protector for manual call point



IF-RKEY

Key to rearm push manual call point