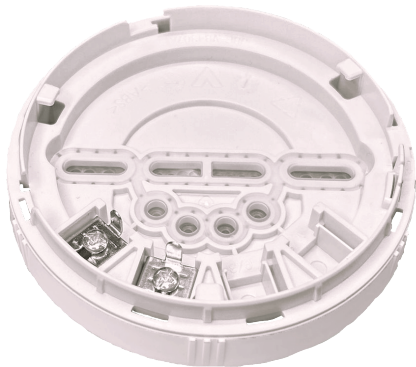


JBE-2163

Base for humid environments for detectors and sounders with 2 contacts



Key Features

- Polarity-insensitive
- Compatible base with all Jade Bird addressable detectors.
- EN54 approved.
- Compatible with humid environments.

TECHNICAL DATA

Dimensions	17 x 97 mm
Colour	White
Environment	Indoor / Compatible with humid environments

This base for humid environments with 2 contacts makes cable installation as simple as possible.

Wiring errors are reduced in this base, as there are only two terminals, where the wire must be connected.

JBE loop devices are polarity-insensitive, so each wire of the loop can be connected to any of the two available terminals.

This base is compatible with all our addressable detectors.