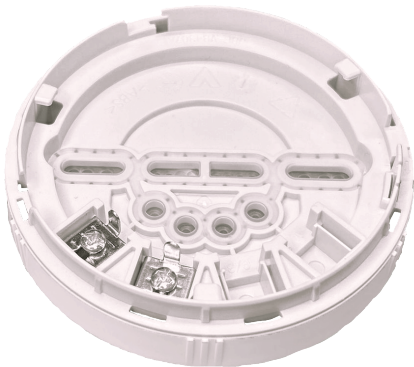


JBE-2167

Base for humid environments for detectors and sounders with 4 contacts



Key Features

- Remote pilot indicator contact available.
- Compatible base with all Jade Bird detectors.
- EN54 approved.
- Compatible with humid environments.

TECHNICAL DATA

Dimensions	17 x 97 mm
Colour	White
Environment	Indoor / Compatible with humid environments

This 4 contacts base is suitable for humid environments.

This standard base allows connection of remote indicators, loop and 24 VDC power if required.

Has a locking mechanism of the device to the base.

This base is required with the JBE-2135 and JBE-2145 sounders. It is also required for conventional detectors: JBE-2112 and JBE-2107.

This base is compatible with all our detectors, both those that require 4 contacts and those that work with 2 contacts.